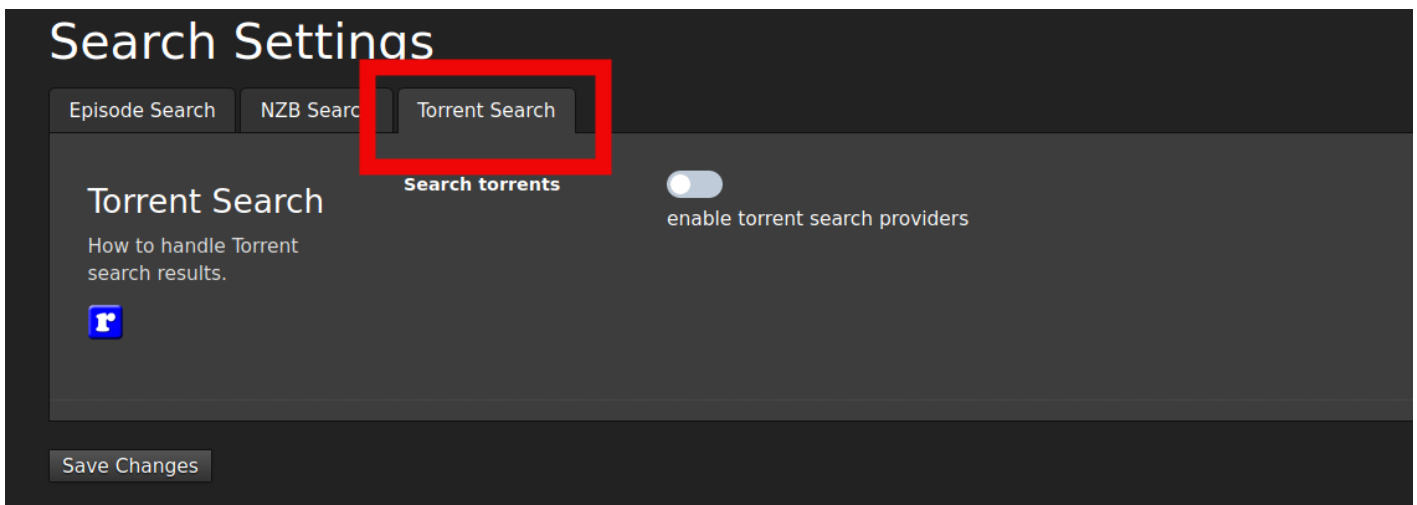


# Download Client Connection Details

## Torrent Clients

- In **Search Settings** to add a Torrent download client click on the **Torrent Search** tab.



## rTorrent

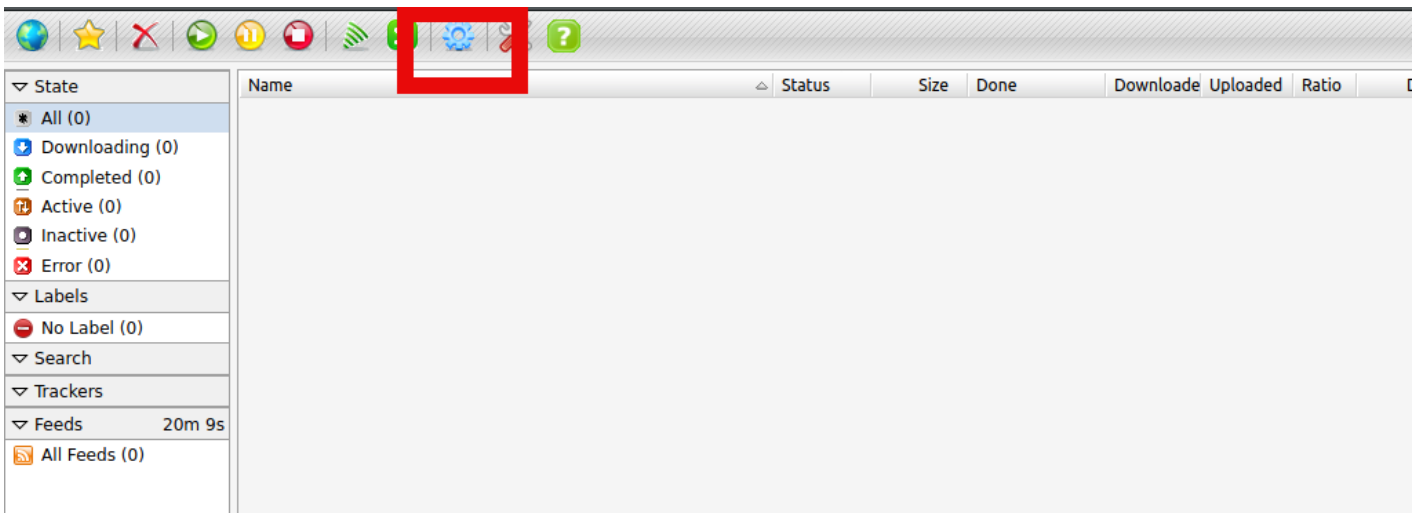
### Connection Settings

```
Search .torrent files: ENABLED
Send .torrent files to: rtorrent
rTorrent host: port:
https: //{username}. {servername}. usbx. me/rutorrent/plugins/httprpc/action. php
Http Authentication: Basic
rTorrent Username: {username}
rTorrent Password: As configured in UCP under ruTorrent
Add Label To Torrent: Medusa
Downloaded Files Location: <EMPTY>
```

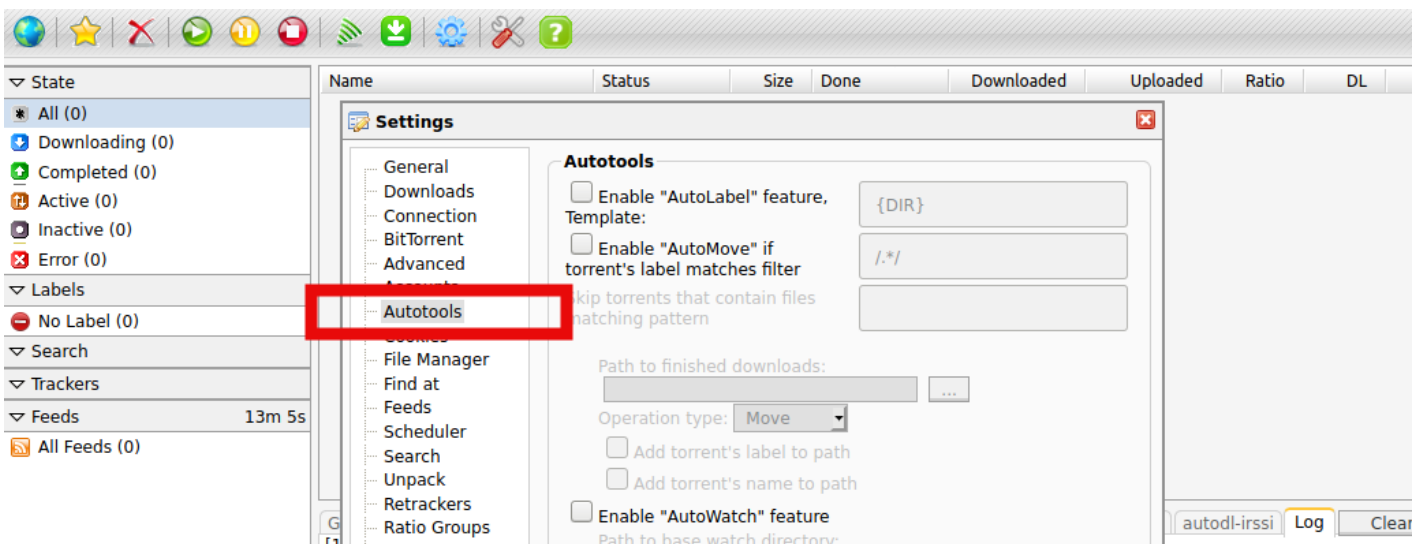
### Post-Processing Setup

- Access and login to your ruTorrent instance using the credentials you set during installation

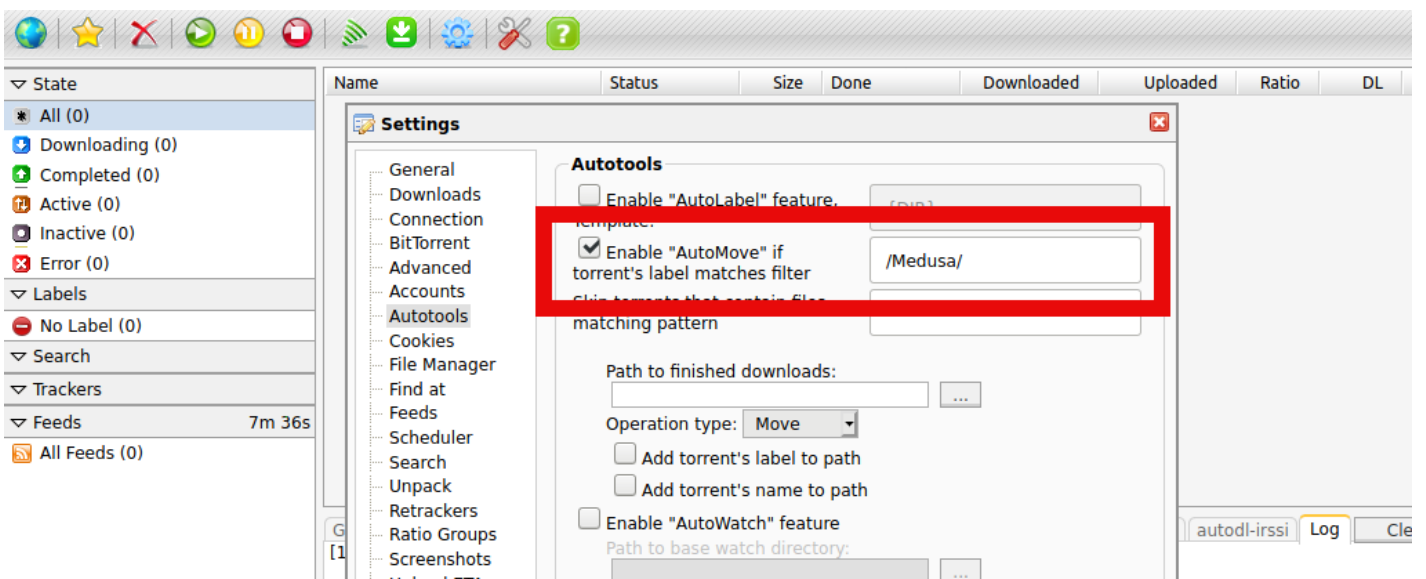
- Go to **Settings** by clicking the **Gear Icon**



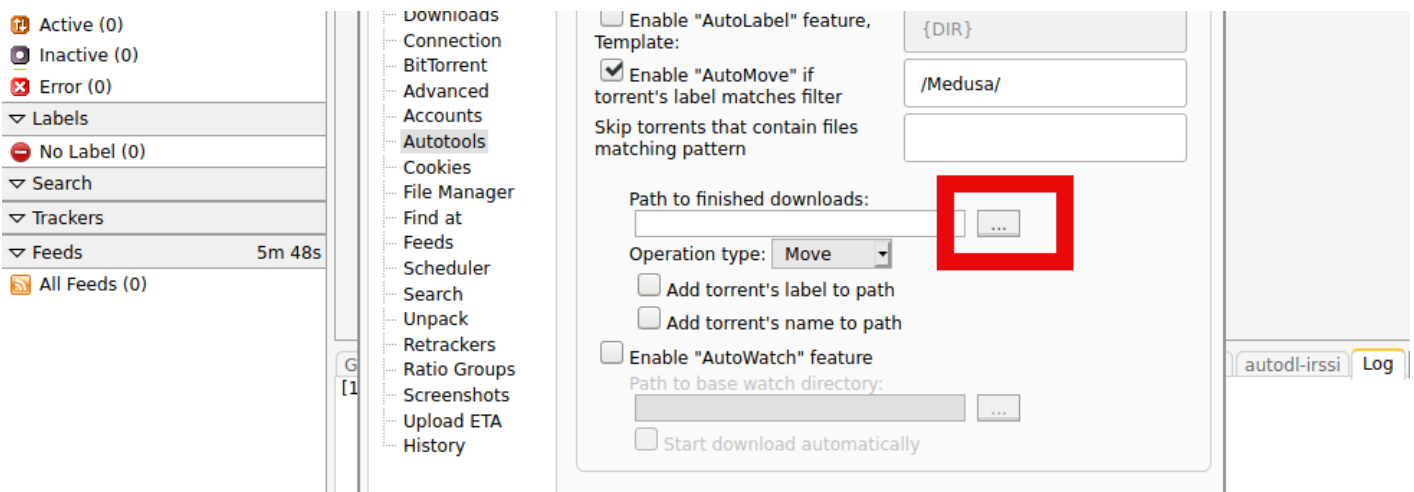
- Click on the **Autotools** section in left column



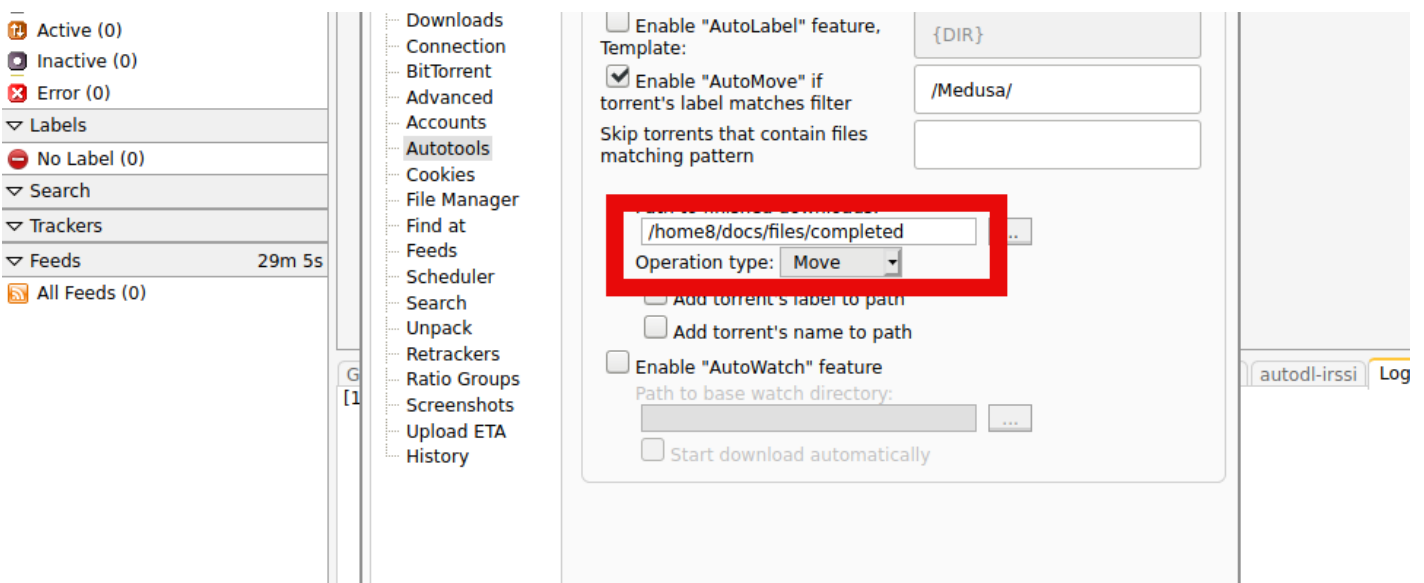
- Enable the checkbox that says: **Enable "Automove" if torrent's label matches fitler"** and change default entry **./** to **/Medusa/**



- Click the directory button next to **Path to finished downloads**



- Upon clicking the directory button, it will auto-fill the default download path your ruTorrent is using. This default location is: `{HOME##}/{USERNAME}/files`
  - Simply add: `/completed` to the end of the path, making the path: `{HOME##}/{USERNAME}/files/completed`
  - `{HOME##}` is your home number, in this example it is `'home8'`
  - `{USERNAME}` is your slot username, in this example it is `docs`



This step is very important if using ruTorrent as your download client. ruTorrent will not append an extension to downloads therefore Medusa's Post-Processor will import incomplete downloads if the Autotools-AutoMove plugin is not used in ruTorrent.

# Transmission

## Connection Settings

```
Search .torrent files: ENABLED
Send .torrent files to: Transmission
Transmission host:port: https://{username}.{servername}.usbx.me
```

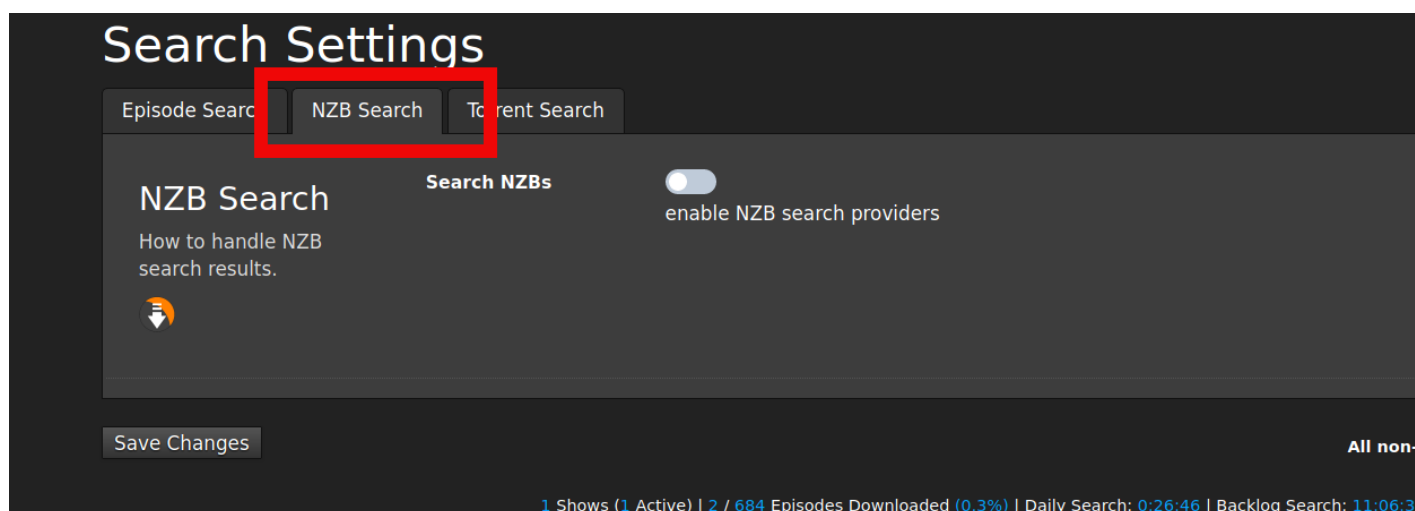
```
Transmission RPC URL: transmission/rpc
Transmission Username: {username}
Transmission Password: As configured in UCP under Transmission
Downloaded Files Location: EMPTY
```

## Post Processing Setup

Transmission appends **".part"** to the downloading file extensions until the download is completed and Medusa will ignore these files with **".part"** extensions, so there is no need to configure any further **Post Processing** directory settings for this client

# Usenet Clients

- In **Search Settings**, to add a Usenet download client click on the **NZB Search** tab.

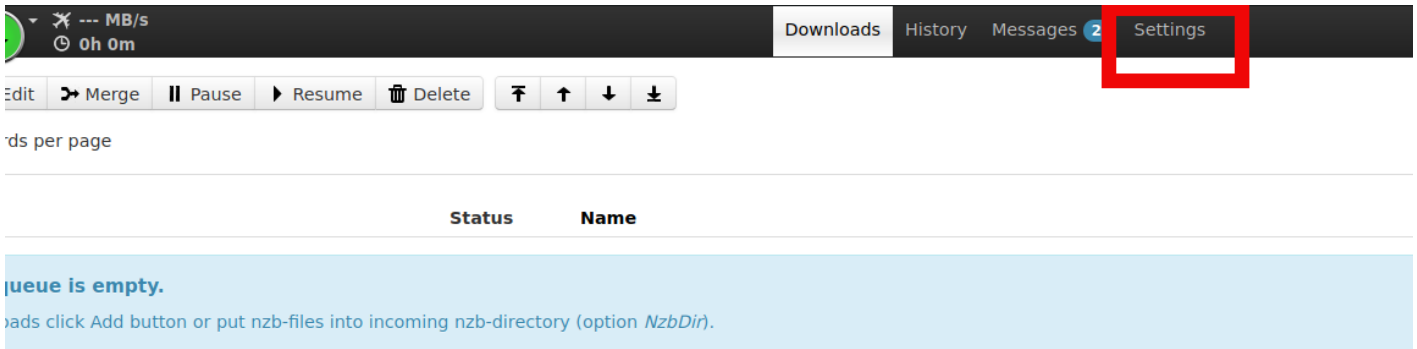


## NZBGet: Connection Settings

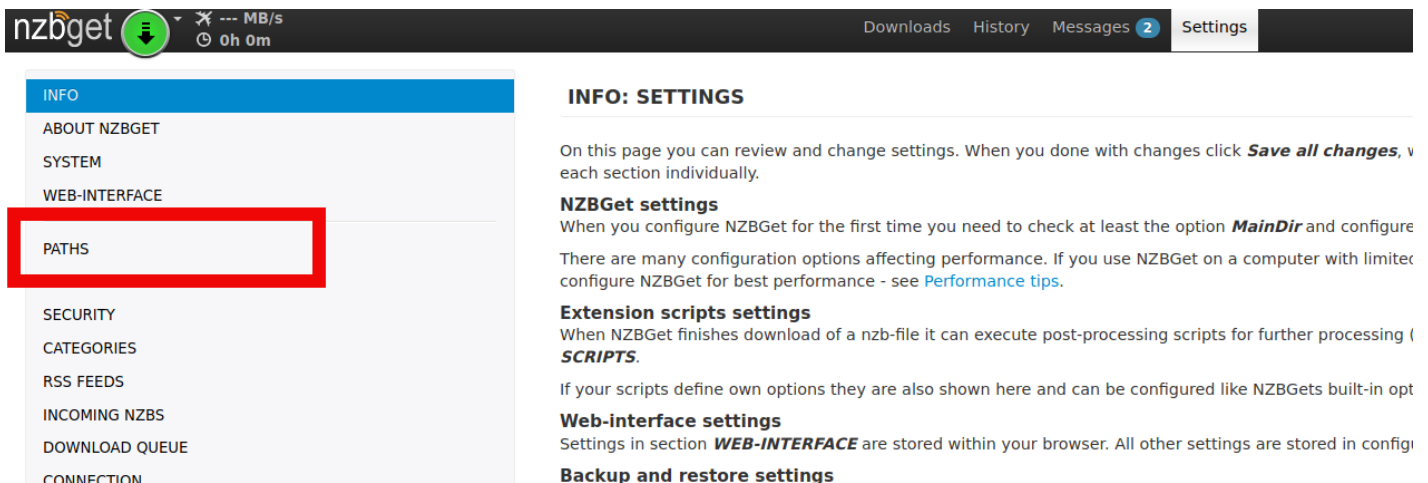
```
Search NZBs: ENABLED
Send .nzb files to: NZBGet
Host: {username}.{servername}.usbx.me/nzbget
Connect using HTTPS: ENABLED
Username: {nzbget username}
Password: {nzbget password}
Use NZBget category: Medusa
Use NZBget category (backlog episodes): Medusa
Use NZBget category for anime: Medusa-Anime
Use NZBget category for anime (backlog episodes): Medusa-Anime
```

# NZBGet: Post Processing Setup

- Access and login to your NZBget instance using the credentials you have set in the application.
- Go to **Settings** In the top right corner of the menu at the top of the initial login page.



- From here click on the **PATHS** link in the menu on left column menu



- Here you will see **MainDir** location default as `/downloads`



- **MainDir** needs to be the full path of the `files` directory in your home.
  - `{HOME}/{USERNAME}/files/`
  - To get the full directory of this folder, you can SSH into your slot and run the command:  
`readlink -f ~/files/`

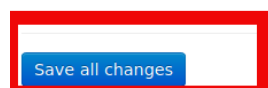
- The output of this command will give you the full path to your home's `files` directory
  - If you are unsure on how to SSH into your slot, you may refer to this guide:
   
<https://docs.ultra.cc/books/secure-shell-%28ssh%29/page/how-to-connect-to-your-ultracc-slot-via-ssh>

Per the example in the screenshot below, {HOME##} is **home8** and the {username} is **docs**, so the full path for the `files` directory would be: `/home8/docs/files`

The screenshot shows the nzbget web interface. The top bar includes the nzbget logo, a download icon, and status information (0h 0m). The left sidebar contains a navigation menu with options: INFO, ABOUT NZBGET, SYSTEM, WEB-INTERFACE, PATHS (selected), NEWS-SERVERS, SECURITY, CATEGORIES, and RSS FEEDS. The main content area is titled 'PATHS' and contains two configuration fields: 'MainDir' with the value '/home8/docs/files' and 'DestDir' with the value '\${MainDir}/completed'. Below these fields are explanatory notes and a 'Save all changes' button at the bottom left.

- Scroll down to the bottom of the page to click **Save all changes** in lower left corner

The screenshot shows the 'Certstore' configuration section. It includes a text input field for the certificate store path, a description: 'Certificate store file or directory.', and two notes: 'NOTE: Certificate verification must be enabled separately via option CertCheck' and 'NOTE: For more details visit http://nzbget.net/certificate-verification.'



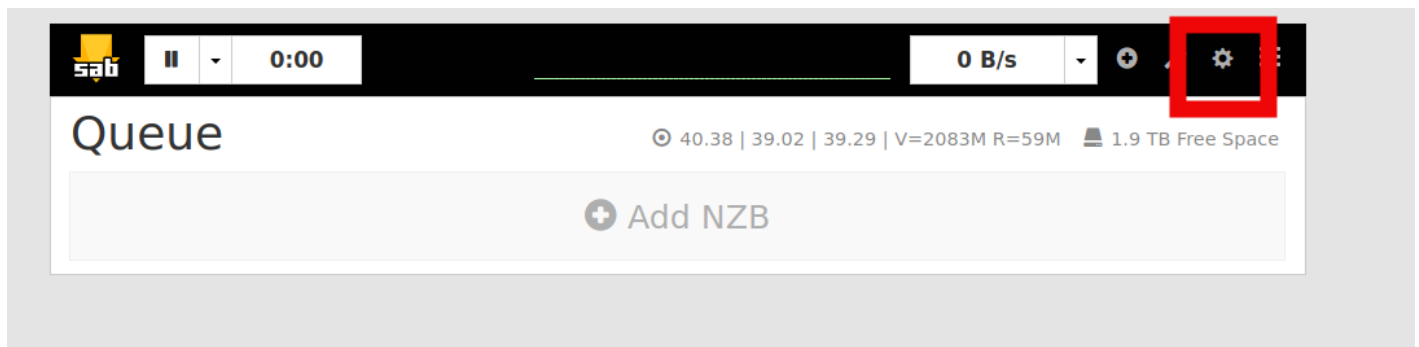
## SABnzbd: Connection Settings

```
Search NZBs: ENABLED
Send .nzb files to: SABnzbd
Host: {username}. {servername}. usbx. me/sabnzbd/
Username: {sabznbd username}
Password: {sabnzbd password}
SABnzbd : {sabnzbd api key}
Use SABnzbd category: Medusa
Use SABnzbd category (backlog episodes): Medusa
Use SABnzbd category for anime: Medusa-Anime
Use SABnzbd category for anime (backlog episodes): Medusa-Anime
```

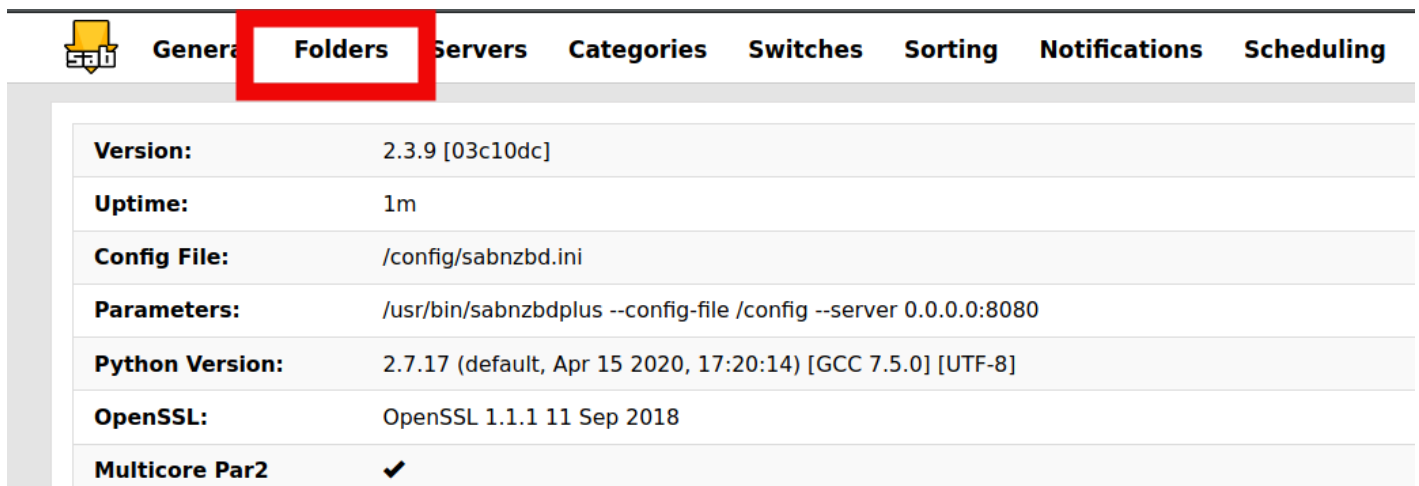
**\*\* It is important to have the trailing / on the end of your SABnzbd host, otherwise Medusa will fail to add NZBs successfully to this client.**

# SABnzbd: Post Processing Setup

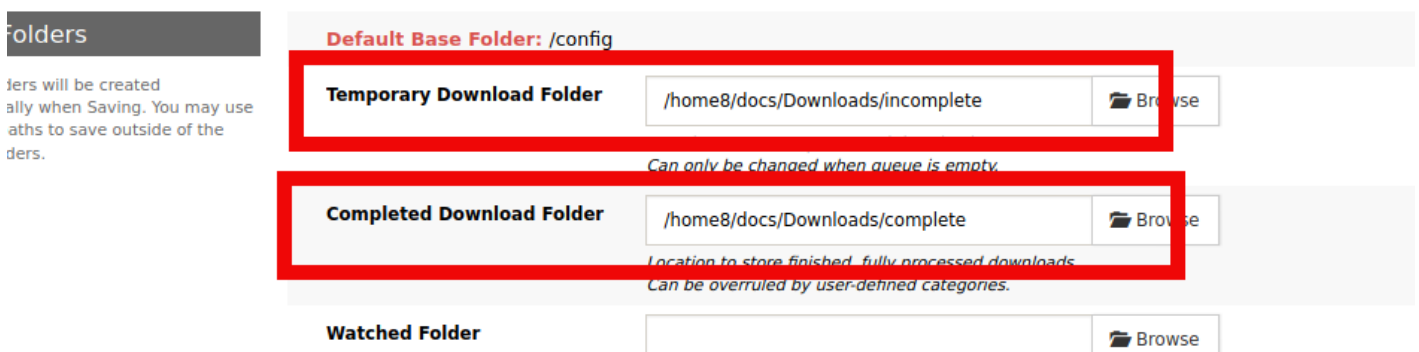
- Access and login to your SABnzbd instance using the credentials you have set in the application.
- Go to **Settings** In the top right corner of the menu at the top of the initial login page.



- Next, click the **Folders** link.



- From here you will see the 2 default directories that need to be changed
  - **Temporary Download Folder:** `{/HOME##}/{USERANME}/Downloads/incomplete`
  - **Completed Download Folder:** `{/HOME##}/{USERANME}/Downloads/complete`



- These 2 default directories need to be set to:
  - **Temporary Download Folder:** `{/HOME##}/{USERANME}/incomplete`
  - **Completed Download Folder:** `{/HOME##}/{USERANME}/files/completed`

## User Folders

*NOTE:* Folders will be created automatically when Saving. You may use absolute paths to save outside of the default folders.

**Default Base Folder:** /config

**Temporary Download Folder**

/home8/docs/incomplete


 Browse

*Location to store unprocessed downloads.*

*Can only be changed when queue is empty.*

**Completed Download Folder**

/home8/docs/files/completed

 Browse

*Location to store finished, fully processed downloads.*

*Can be overrided by user-defined categories.*

Revision #3

Created 6 July 2020 12:15:35

Updated 17 April 2023 10:39:53 by varg