

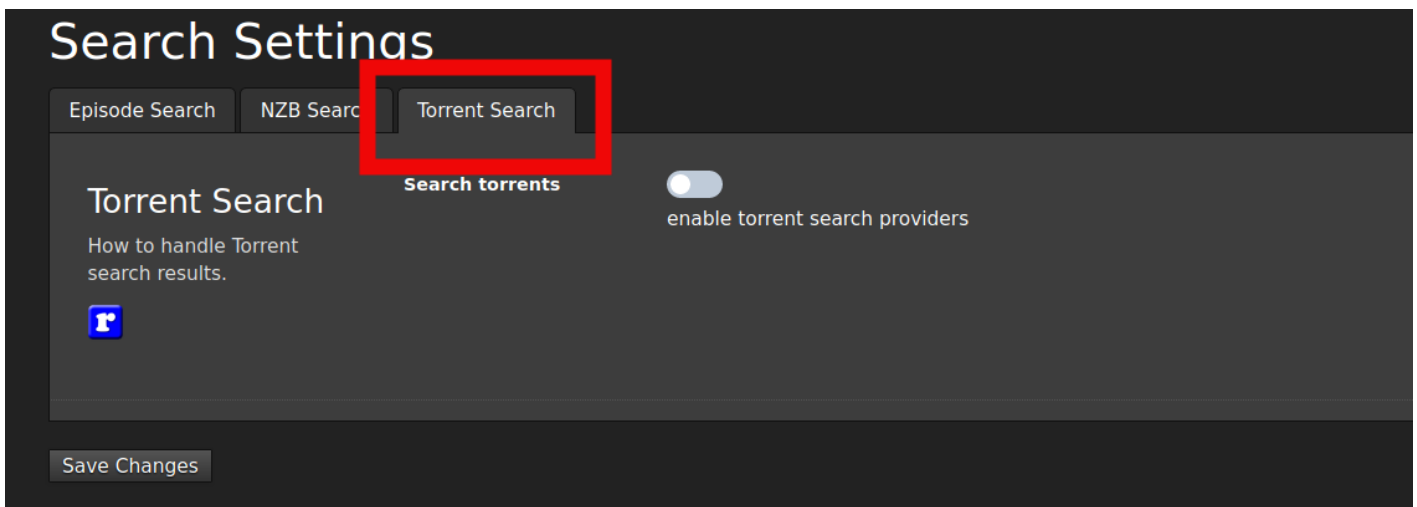
Extra Guides(MEDUSA)

- [Download Client Connection Details](#)

Download Client Connection Details

Torrent Clients

- In **Search Settings** to add a Torrent download client click on the **Torrent Search** tab.



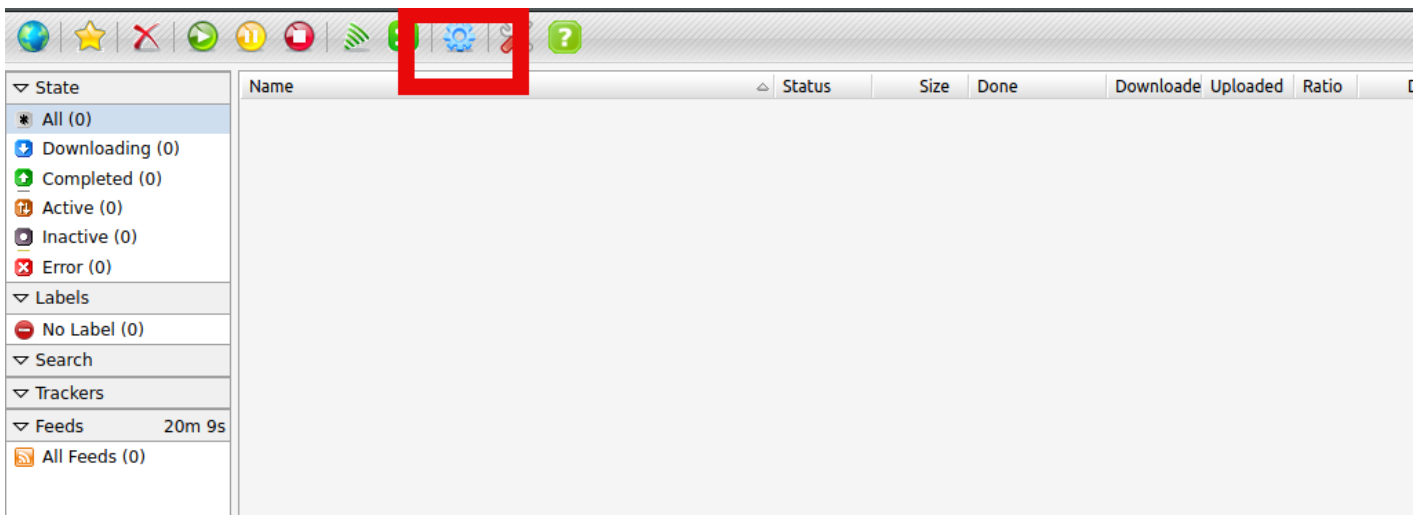
rTorrent

Connection Settings

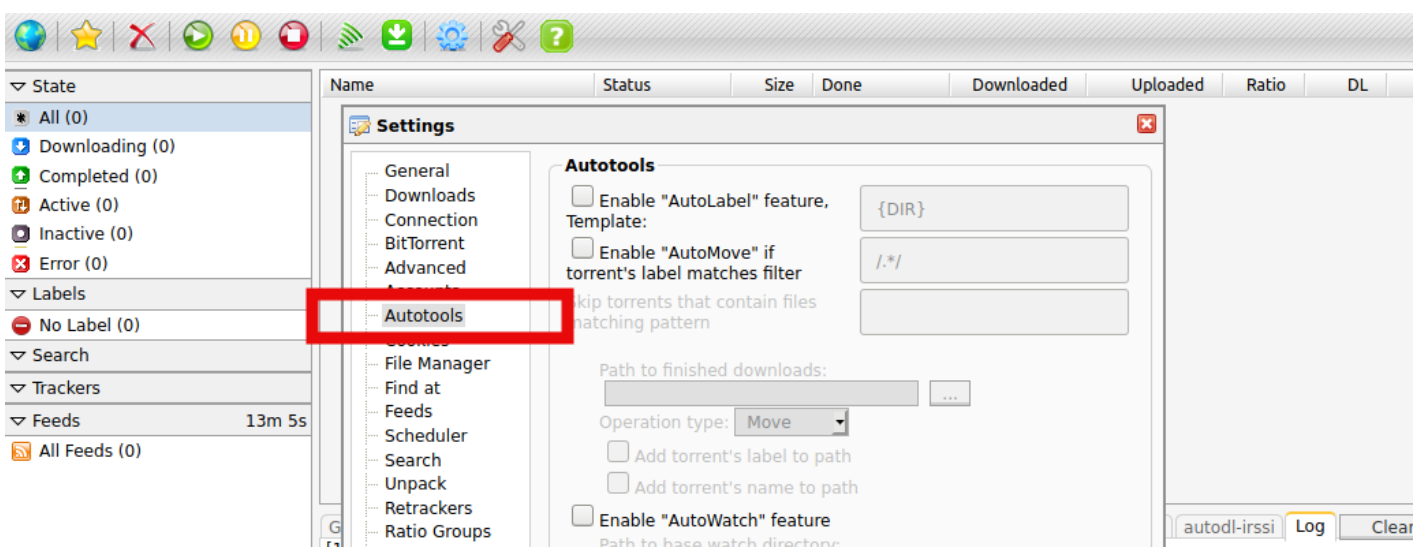
```
Search .torrent files: ENABLED
Send .torrent files to: rtorrent
rTorrent host: port:
https://{username}.{servername}.usbx.me/rutorrent/plugins/httprpc/action.php
Http Authentication: Basic
rTorrent Username: {username}
rTorrent Password: As configured in UCP under ruTorrent
Add Label To Torrent: Medusa
Downloaded Files Location: <EMPTY>
```

Post-Processing Setup

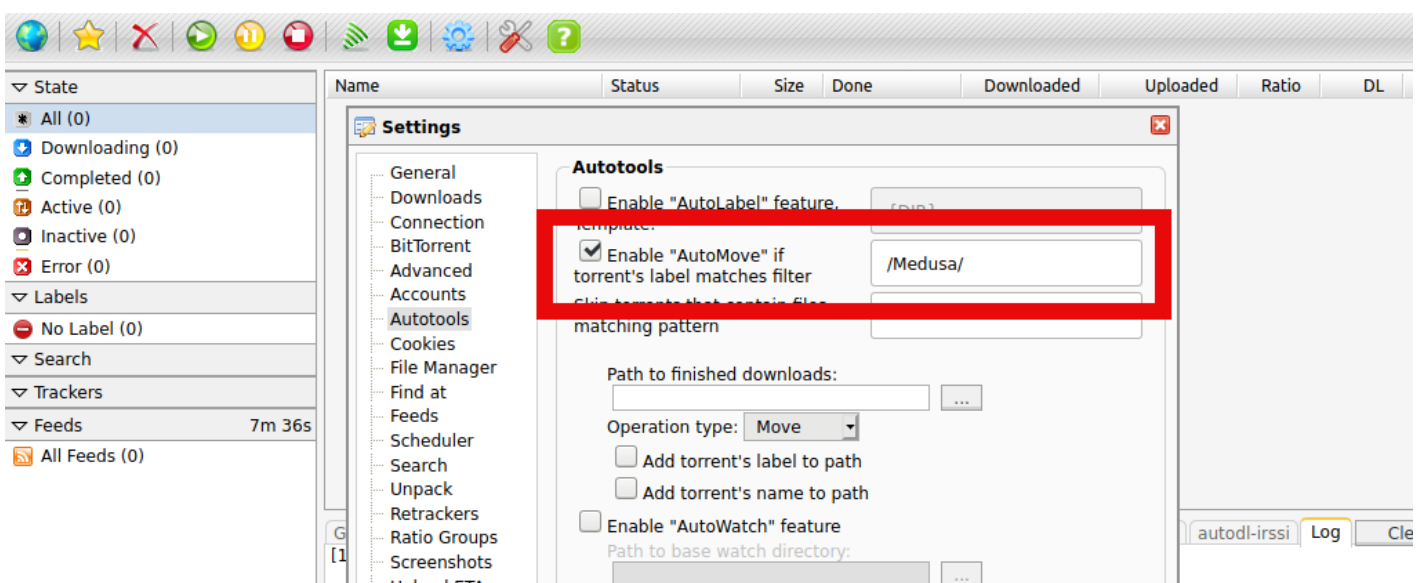
- Access and login to your ruTorrent instance using the credentials you set during installation
- Go to **Settings** by clicking the **Gear Icon**



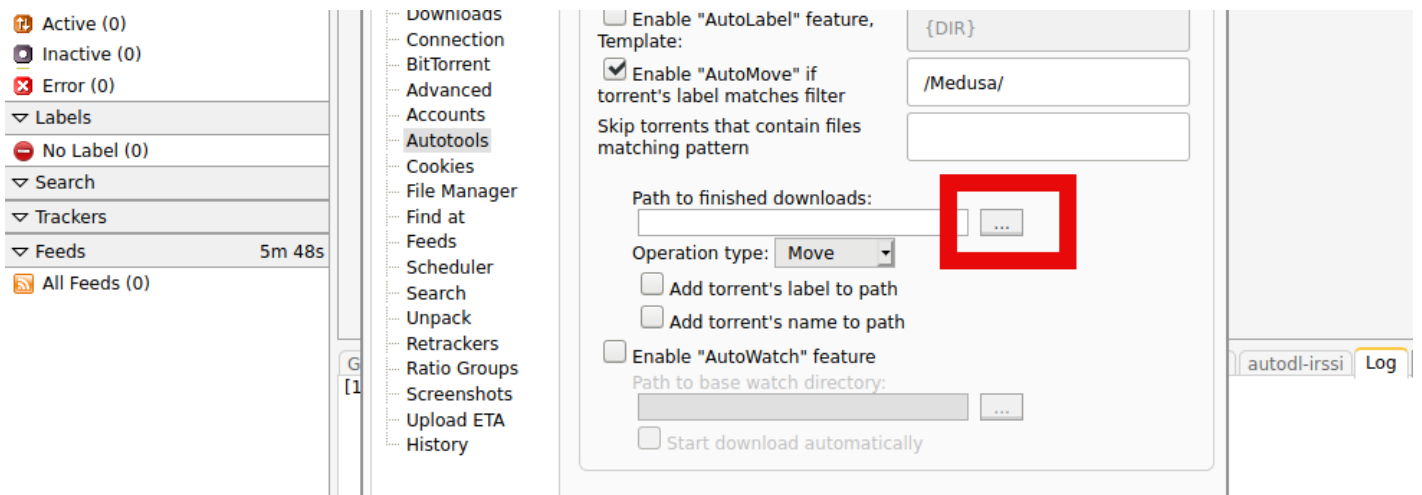
- Click on the **Autotools** section in left column



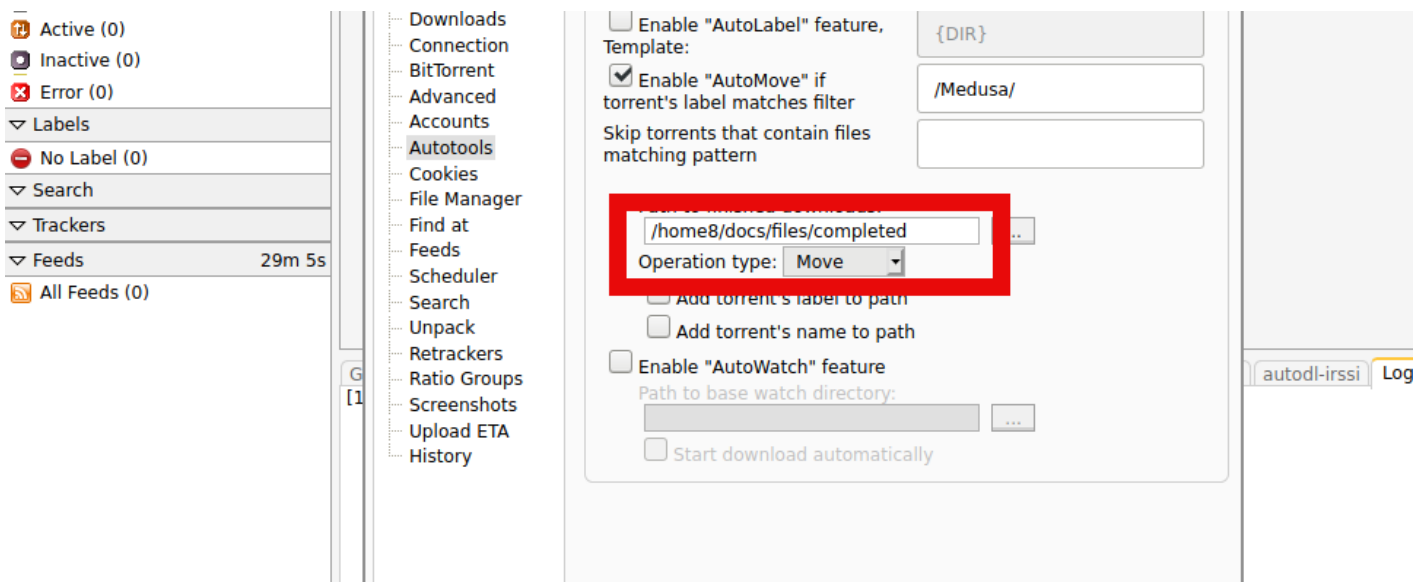
- Enable the checkbox that says: **Enable "Automove" if torrent's label matches filter** and change default entry **./** to **/Medusa/**



- Click the directory button next to **Path to finished downloads**



- Upon clicking the directory button, it will auto-fill the default download path your ruTorrent is using. This default location is: `{HOME##}/{USERNAME}/files`
 - Simply add: `/completed` to the end of the path, making the path: `{HOME##}/{USERNAME}/files/completed`
 - `{HOME##}` is your home number, in this example it is `'home8'`
 - `{USERNAME}` is your slot username, in this example it is `docs`



This step is very important if using ruTorrent as your download client. ruTorrent will not append an extension to downloads therefore Medusa's Post-Processor will import incomplete downloads if the Autotools-AutoMove plugin is not used in ruTorrent.

Transmission

Connection Settings

```
Search .torrent files: ENABLED
Send .torrent files to: Transmission
Transmission host:port: https://{username}.{servername}.usbx.me
Transmission RPC URL: transmission/rpc
```

Transmission Username: {username}

Transmission Password: As configured in UCP under Transmission

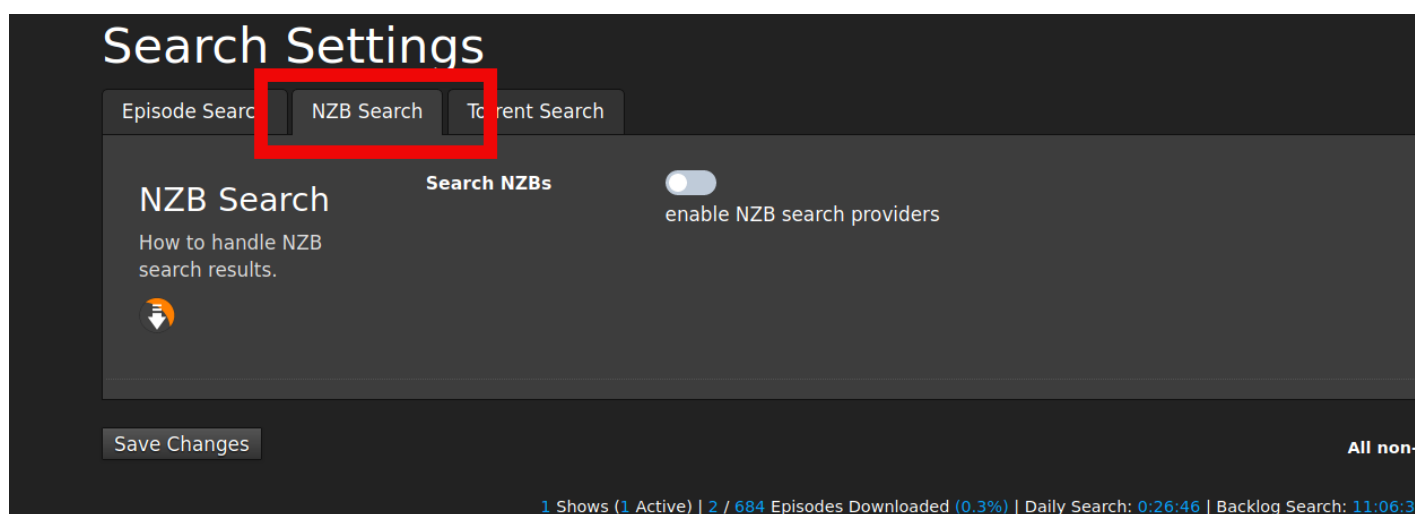
Downloaded Files Location: EMPTY

Post Processing Setup

Transmission appends ".part" to the downloading file extensions until the download is completed and Medusa will ignore these files with ".part" extensions, so there is no need to configure any further **Post Processing** directory settings for this client

Usenet Clients

- In **Search Settings**, to add a Usenet download client click on the **NZB Search** tab.



NZBGet: Connection Settings

Search NZBs: ENABLED

Send .nzb files to: NZBGet

Host: {username}.{servername}.usbx.me/nzbget

Connect using HTTPS: ENABLED

Username: {nzbget username}

Password: {nzbget password}

Use NZBget category: Medusa

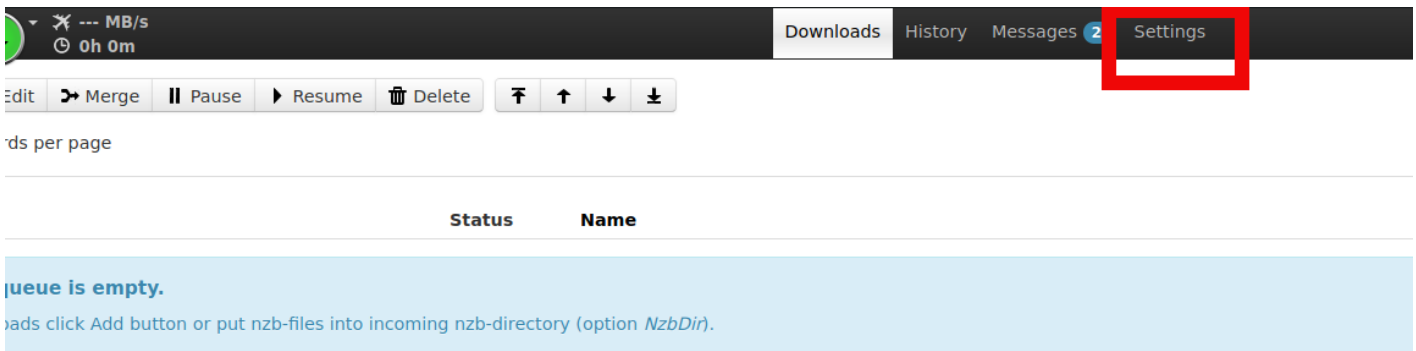
Use NZBget category (backlog episodes): Medusa

Use NZBget category for anime: Medusa-Anime

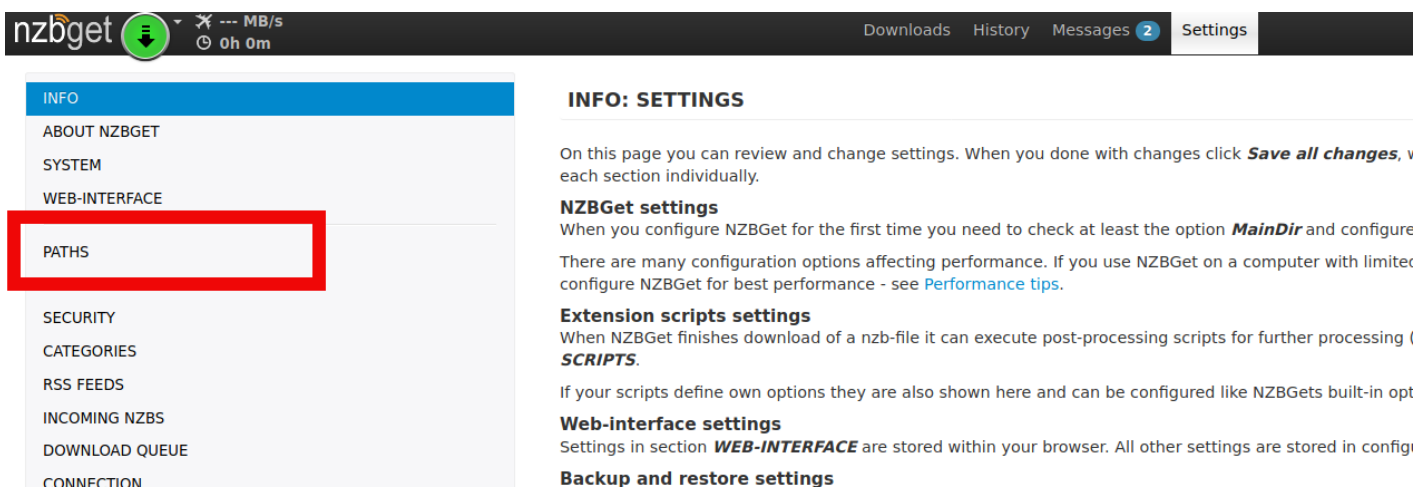
Use NZBget category for anime (backlog episodes): Medusa-Anime

NZBGet: Post Processing Setup

- Access and login to your NZBget instance using the credentials you have set in the application.
- Go to **Settings** In the top right corner of the menu at the top of the initial login page.



- From here click on the **PATHS** link in the menu on left column menu



- Here you will see **MainDir** location default as `/downloads`



- **MainDir** needs to be the full path of the `files` directory in your home.
 - `/home/username/files/`
 - To get the full directory of this folder, you can SSH into your slot and run the command: `readlink -f ~/files/`
 - The output of this command will give you the full path to your home's `files` directory
 - If you are unsure on how to SSH into your slot, you may refer to this guide: <https://docs.ultra.cc/books/secure-shell-%28ssh%29/page/how-to-connect-to-your->

Per the example in the screenshot below, {HOME##} is **home8** and the {username} is **docs**, so the full path for the `files` directory would be: `/home8/docs/files`

PATHS

MainDir
 Root directory for all tasks.

On POSIX you can use "~" as alias for home directory (e.g. "~/download").
 On Windows use absolute paths (e.g. "C:\Downloads").

DestDir
 Destination directory for downloaded files.

If you want to distinguish between partially downloaded files and comple

- Scroll down to the bottom of the page to click **Save all changes** in lower left corner

CertStore

Certificate store file or directory.

Certificate store contains root certificates used for server certificate verification with news-servers for article downloading and with web-servers (via https) for

The option can point either to one big file containing all root certificates or to

Example: /etc/ssl/certs/ca-certificates.crt.

NOTE: Certificate verification must be enabled separately via option **CertChe**

NOTE: For more details visit <http://nzbget.net/certificate-verification>.

Save all changes

Deluge

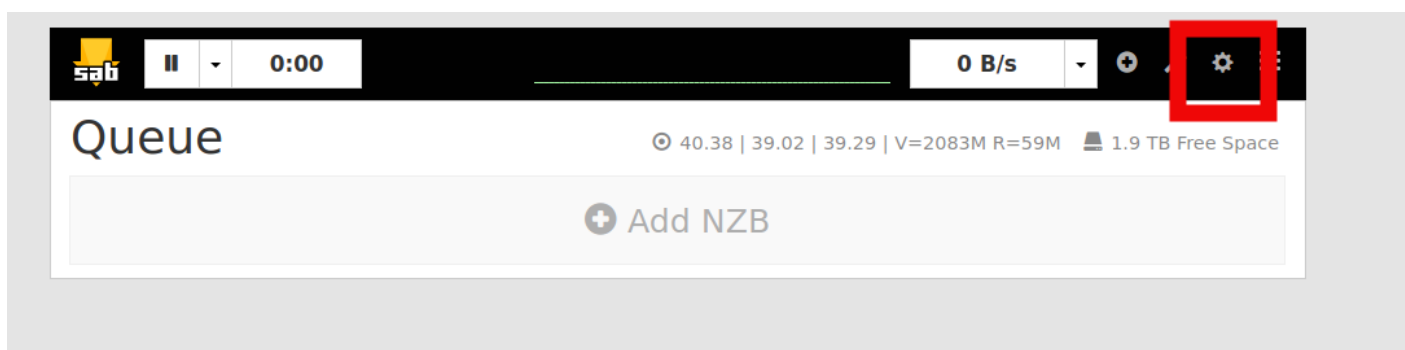
SABnzbd: Connection Settings

```
Search NZBs: ENABLED
Send .nzb files to: SABnzbd
Host: {username}.{servername}.usbx.me/sabnzbd/
Username: {sabznbd username}
Password: {sabnzbd password}
SABnzbd : {sabnzbd api key}
Use SABnzbd category: Medusa
Use SABnzbd category (backlog episodes): Medusa
Use SABnzbd category for anime: Medusa-Anime
Use SABnzbd category for anime (backlog episodes): Medusa-Anime
```

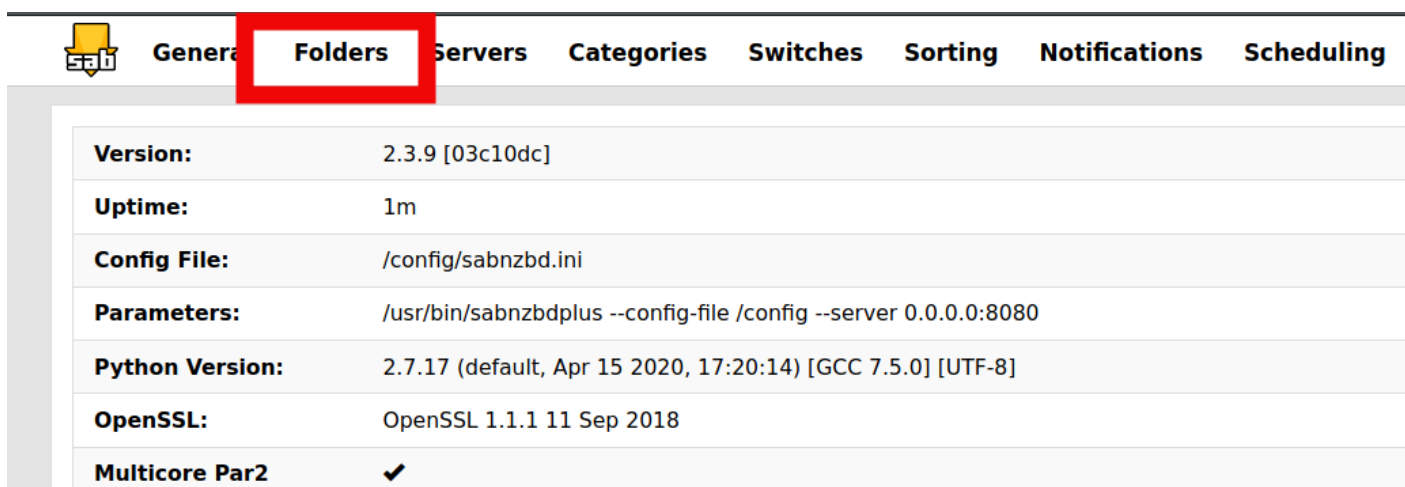
****It is important to have the trailing / on the end of your SABnzbd host, otherwise Medusa will fail to add NZBs successfully to this client.**

SABnzbd: Post Processing Setup

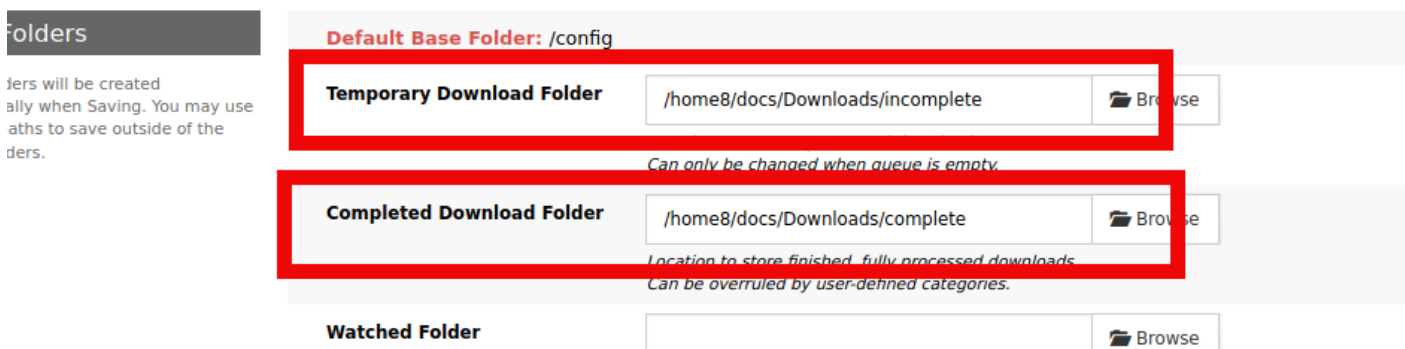
- Access and login to your SABnzbd instance using the credentials you have set in the application.
- Go to **Settings** In the top right corner of the menu at the top of the initial login page.



- Next, click the **Folders** link.



- From here you will see the 2 default directories that need to be changed
 - **Temporary Download Folder:** `{HOME}/{USERANME}/Downloads/incomplete`
 - **Completed Download Folder:** `{HOME}/{USERANME}/Downloads/complete`



- These 2 default directories need to be set to:
 - **Temporary Download Folder:** `{HOME}/{USERANME}/incomplete`
 - **Completed Download Folder:** `{HOME}/{USERANME}/files/completed`

User Folders

NOTE: Folders will be created automatically when Saving. You may use absolute paths to save outside of the default folders.

Default Base Folder: /config

Temporary Download Folder

/home8/docs/incomplete


 Browse

Location to store unprocessed downloads.

Can only be changed when queue is empty.

Completed Download Folder

/home8/docs/files/completed

 Browse

Location to store finished, fully processed downloads.

Can be overrided by user-defined categories.