

# Jellyseerr

Jellyseerr is a free and open-source fork of Overseerr for managing requests for your media library.

- [Jellyseerr](#)

# Jellyseerr

Jellyfin is a request management and media discovery tool for the Jellyfin ecosystem. It will also work for Plex and Emby, though some features may vary.

For more information about this app, follow [this link](#).

## Prerequisites

- Media Server – Jellyfin, Plex or Emby.
- Sonarr, Radarr, or Lidarr

## Initial Setup

- From your [User Control Panel](#), go to the **Installers** tab and find Jellyseerr in the list. Click the **Install** button and wait until the installation has been completed.

## Configuration

- After the installation, access the web UI of Jellyseerr from the **Apps** tab on the [User Control Panel](#).
- You will be given the choice to configure Jellyseerr with your Plex, Jellyfin or Emby instance. We will show you all procedures in this guide and will start with Jellyfin.

## Jellyfin

## Sign in to your account

Enter your Jellyfin details

Jellyfin URL

Port

https:// username.hostname.usbx.me

443

Use SSL



URL Base

/jellyfin

Email Address ⓘ

your@emailaddress.com

Username

ultra-example-username

Password

.....

Go back

Sign In

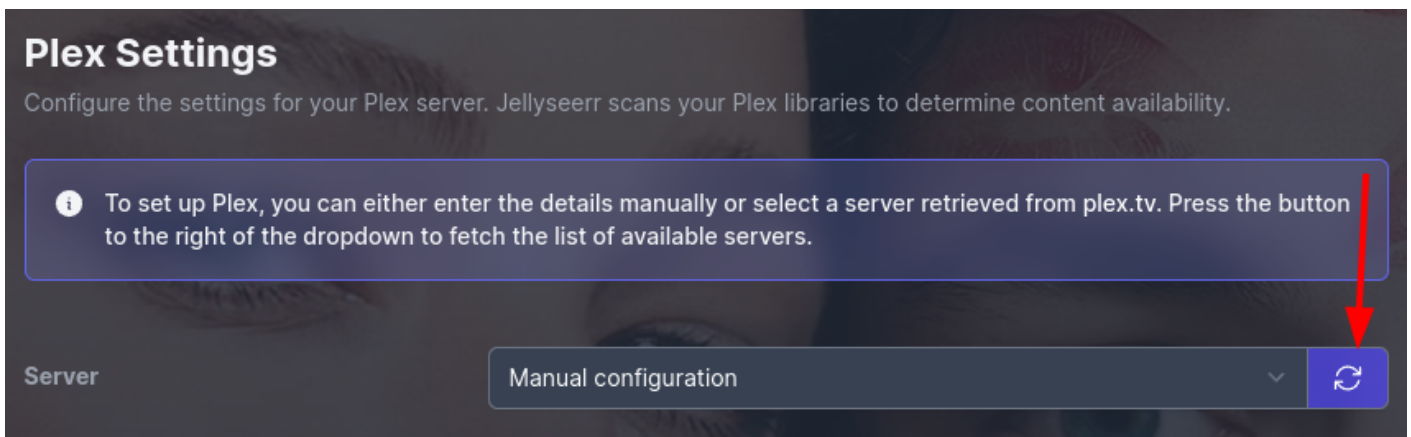
After you have selected to configure Jellyfin, you will be prompted to type in your Jellyfin connection details.

- **Jellyfin URL:** Should be in format `<username>. <hostname>. usbx. me`. Make sure to replace `<username>` and `<hostname>` with your username and hostname, which can be found on the [UCP](#).
  - **Port:** 443
  - **Use SSL:** Yes ?
  - **URL Base:** `/jellyfin`
  - **Email Address:** Use any email you have access to, it does not have to be associated with your Jellyfin instance.
  - **Username:** This is your Ultra.cc username for the service you have installed Jellyfin on, can be found on the [UCP](#).
  - **Password:** The password you chose when installing Jellyfin, can be found on the [UCP](#).
  - Click the **Sign In** button in the bottom right corner.
- 
- Once you have connected to your Jellyfin instance, the next step is to configure the libraries for your media server.
  - Scroll down to the [Configure Libraries](#) section

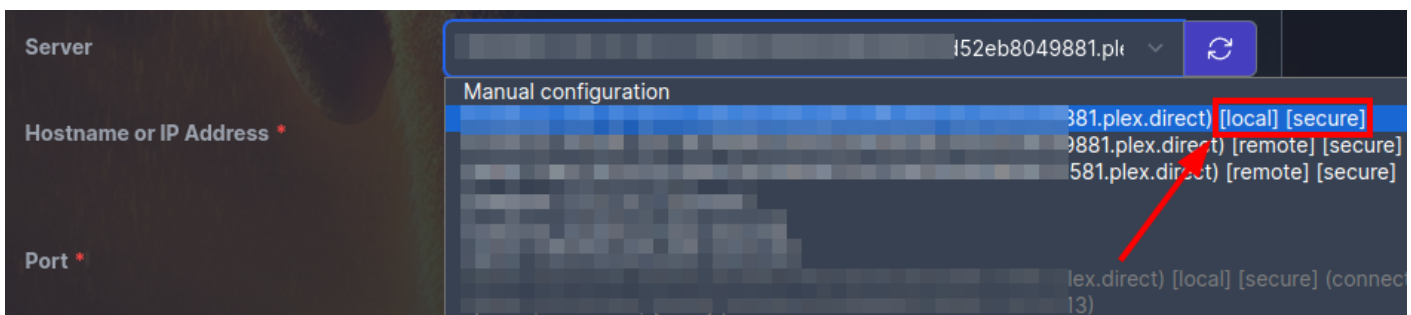
## Plex

- Once you have logged in to your Plex account, you need to configure the settings for your Plex server.

- As shown in the below image, click on the refresh button.



- Once the server list has been refreshed, expand the dropdown and you should see your Plex server in the list.
- Make sure to select the entry that includes `[ local ] [ secure ]` at the end. See below image.




- Make sure the **Port** field is `32400`.
- Make sure **Use SSL** is ? (enabled).
- If done correctly, it should look like the below image.

## Plex Settings

Configure the settings for your Plex server. Jellyseerr scans your Plex libraries to determine content availability.

**i** To set up Plex, you can either enter the details manually or select a server retrieved from plex.tv. Press the button to the right of the dropdown to fetch the list of available servers.

Server



Hostname or IP Address \*

Port \*

Use SSL



Web App URL **Advanced**

Optionally direct users to the web app on your server instead of the "hosted" web app

 Save Changes

- Click the **Save Changes** button.
- Once you have connected to your Plex instance, the next step is to configure the libraries for your media server.
- Scroll down to the [Configure Libraries](#) section

## Emby

## Sign in to your account

Enter your Emby details

Emby URL

https:// username.hostname.usbx.me

Port

443

Use SSL



URL Base

/emby

Email Address ⓘ

your@emailaddress.com

Username

ultra-example-username

Password

.....

Go back

Sign In

After you have selected to configure Emby, you will be prompted to type in your Emby connection details.


- **Emby URL:** Should be in format `<username>. <hostname>. usbx. me`. Make sure to replace `<username>` and `<hostname>` with your username and hostname, which can be found on the [UCP](#).
- **Port:** 443
- **Use SSL:** Yes ?
- **URL Base:** /emby
- **Email Address:** Use any email you have access to, it does not have to be associated with your Emby instance.
- **Username:** This is your Ultra.cc username for the service you have installed Emby on, can be found on the [UCP](#).
- **Password:** The password you chose when installing Emby, can be found on the [UCP](#).
- Click the **Sign In** button in the bottom right corner.

## Configure Libraries

- The process of configuring your media libraries are identical no matter if you have logged in using your Plex or Jellyfin account.
- Once you have logged in to your Jellyfin/Plex account, your media server libraries should appear further down.

## Plex Libraries

The libraries Jellyseerr scans for titles. Set up and save your Plex connection settings, then click the button below if no libraries are listed.

 Sync Libraries

4K Movies



1080p Movies



TV Shows



## Manual Library Scan

Normally, this will only be run once every 24 hours. Jellyseerr will check your Plex server's recently added more aggressively. If this is your first time configuring Plex, a one-time full manual library scan is recommended!

Not running

 Start Scan

Tip

Scanning will run in the background. You can continue the setup process in the meantime.

Continue

- If no libraries appear, click the **Sync Libraries** button, as shown in the above image.
- Enable the libraries you want Jellyseerr to access.
- Click the **Start Scan** button, as shown in the above image. The library scan will run in the background, so you can proceed with the setup process.
- Click the **Continue** button in the bottom right corner.

## Radarr Settings

Configure your Radarr server(s) below. You can connect multiple Radarr servers, but only two of them can be marked as defaults (one non-4K and one 4K). Administrators are able to override the server used to process new requests prior to approval.

+ Add Radarr Server

## Sonarr Settings

Configure your Sonarr server(s) below. You can connect multiple Sonarr servers, but only two of them can be marked as defaults (one non-4K and one 4K). Administrators are able to override the server used to process new requests prior to approval.

+ Add Sonarr Server

Finish Setup

- Click the `+ Add Radarr Server` button.
- Tick **Default Server**
- Choose a **Server Name**
- Enter **Hostname**, it should be `<username>. <servername>. usbx. me`, in our case it is `ultradocs. nexus. usbx. me`
- Set **Port** to `443`
- Tick **Use SSL**
- Paste **API Key**, which can be found in Radarr's `Settings > General > Security > API Key`
- Set **Base URL** to `/radarr`



## Add New Radarr Server

Default Server



4K Server



Server Name \*

Ultradocs

Hostname or IP Address \*

https:// ultradocs.nexus.usbx.me

Port \*

443

Use SSL



API Key \*

.....



URL Base

/radarr

Quality Profile \*

Test connection to load quality profiles



Root Folder \*

Test connection to load root folders



Minimum Availability \*

Released



Tags

Test connection to load tags



External URL

Enable Scan



Enable Automatic Search



Tag Requests



Automatically add an additional tag with the requester's user ID & display name

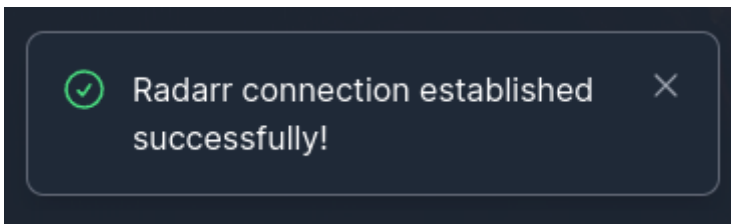
Cancel

Test

Add Server



- Once you have entered all the above details, click the yellow **Test** button in the bottom right corner.



- If done successfully, you should see the above notification in the top right corner.
- Next, select a **Quality Profile**, set your **Root Folder** and set the **Minimum Availability**.
- Click the **Add Server** button in the bottom right corner.

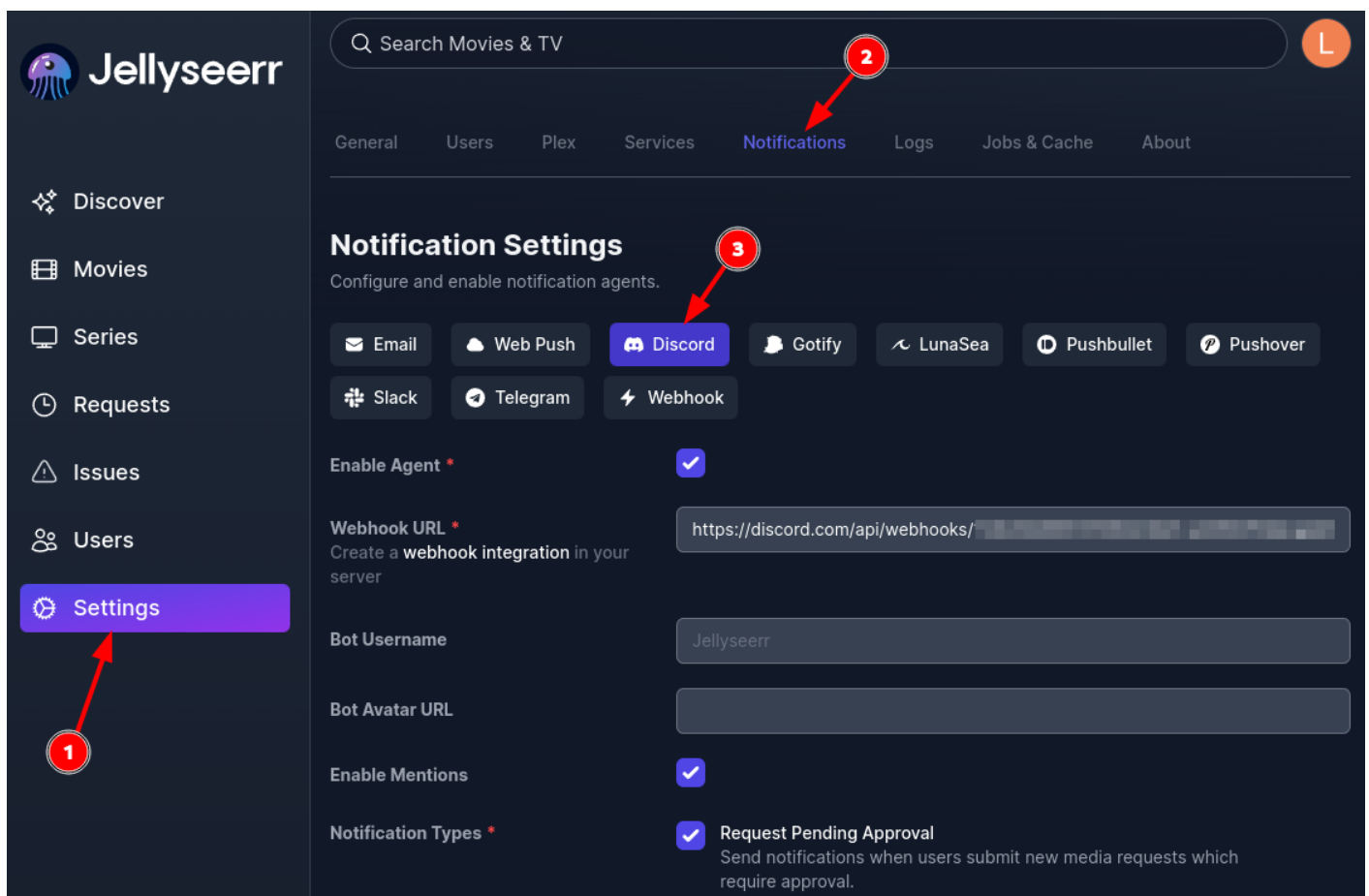
Now, if you want to connect your Sonarr instance to Jellyseerr, click on the + Add Sonarr Server button and repeat the above steps. Or if you are done, see the last step below.

- Click the **Finish Setup** button in the bottom right corner.

## Discord Notifications via Webhook

Jellyseerr can be configured to send notifications to Discord for certain events as request pending approval, request available, etc.

- First, create a Discord Webhook for your Discord server. See [this link](#) for instructions.
- Copy Webhook URL.
- In the Jellyseerr dashboard, go to **Settings > Notifications > Discord**. As shown in the below image.



- Paste the Discord Webhook URL in the **Webhook URL** field, as shown in the above image.
- Next, select the **Notification Types** you want to be notified of.

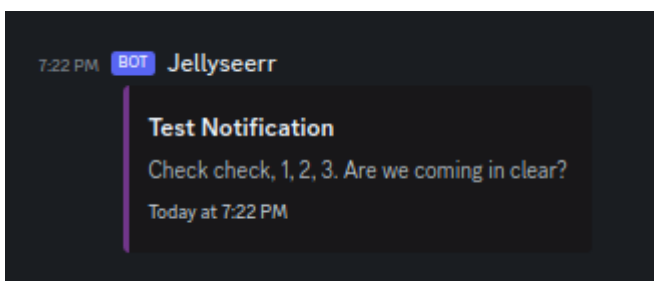
**Notification Types \***

- ☒ **Request Pending Approval**  
Send notifications when users submit new media requests which require approval.
- ☒ **Request Automatically Approved**  
Send notifications when users submit new media requests which are automatically approved.
- ☐ **Request Approved**  
Send notifications when media requests are manually approved.
- ☐ **Request Declined**  
Send notifications when media requests are declined.
- ☒ **Request Available**  
Send notifications when media requests become available.
- ☒ **Request Processing Failed**  
Send notifications when media requests fail to be added to Radarr or Sonarr.
- ☒ **Issue Reported**  
Send notifications when issues are reported.
- ☐ **Issue Comment**  
Send notifications when issues receive new comments.
- ☐ **Issue Resolved**  
Send notifications when issues are resolved.
- ☐ **Issue Reopened**  
Send notifications when issues are reopened.

**1** **2**

**Test** **Save Changes**

- Next, click the **Test** button to send a test notification to your Discord server.



- Lastly, click the **Save Changes** button.

## HTTP access to Jellyseerr

- Accessing Jellyseerr via HTTP will eliminate the issue of auth pop-ups appearing while browsing different webpages of Jellyseerr.
- To access it via HTTP, use the following URL: `http: //{servername}-direct.usbx.me: {Jellyseerr's Port}`. Servername and port can be found on the [User Control Panel](#).